



MONTHLY MEMBERSHIP PROGRESS REPORT

District 318 A

Results as of: 11/30/2017

GMT: N S SANKAR

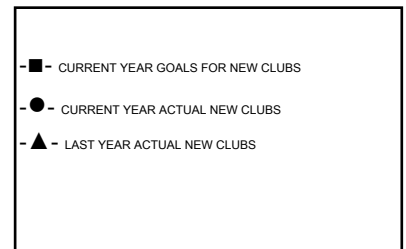
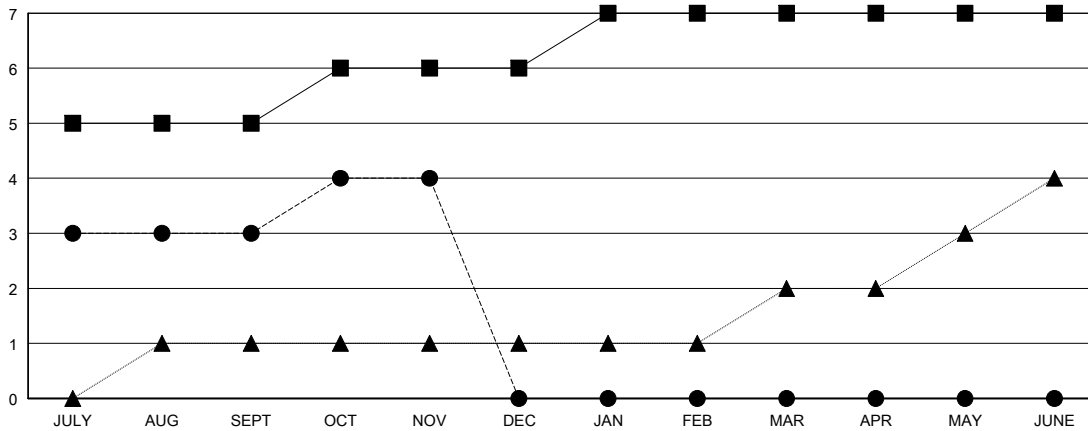
LOCATION INDIA

GMT CA

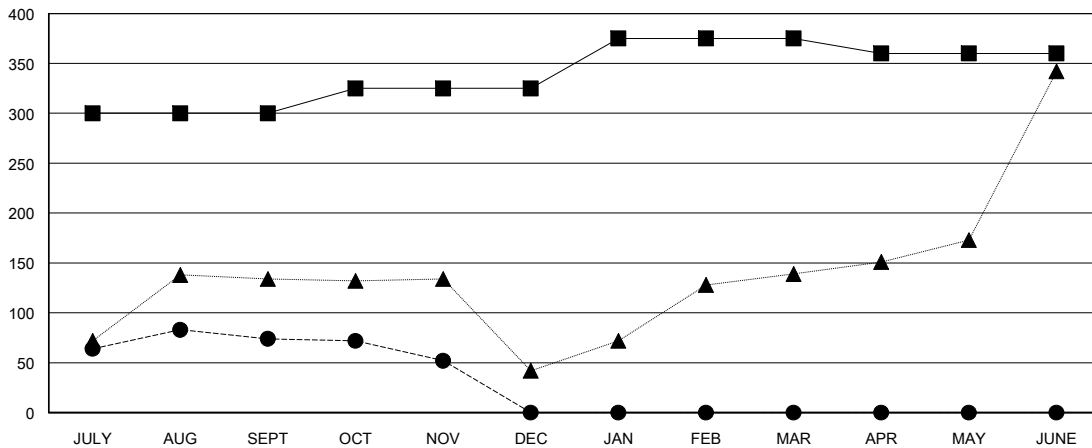
Clubs			
RESULTS FOR 2017-2018			
QUARTER	NEW CLUB GOAL	NEW CLUBS	DROPPED CLUBS
JULY/AUG/SEPT	5	3	0
OCT/NOV/DEC	1	1	0
JAN/FEB/MAR	1	0	0
APR/MAY/JUNE	0	0	0

Members			
RESULTS FOR 2017-2018			
QUARTER	MEMBER GROWTH NET GOAL	MEMBER GROWTH ACTUAL	DROPPED MEMBERS ACTUAL (including transfers)
JULY/AUG/SEPT	300	186	107
OCT/NOV/DEC	25	39	59
JAN/FEB/MAR	50	0	0
APR/MAY/JUNE	-15	0	0

GOALS AND ACTUAL NEW CLUBS CUMULATIVE



GOALS AND ACTUAL MEMBERS CUMULATIVE



DROPPED CLUBS: 0

44 CLUBS OF 118 ADDED 1 OR MORE NEW MEMBERS

GENDER DISTRIBUTION	
MALE	2,963 (83.00%)
FEMALE	607 (17.00%)
Women Percentage Fiscal Year Goal: 20%	

DROPPED MEMBERS	
DECEASED	6
CLUB CANCELLED	0
OTHER	160
TOTAL	166

[CLICK HERE FOR CUMULATIVE MEMBERSHIP DATA](#)

TOTAL FAMILY UNIT MEMBERS	1,036
FAMILY MEMBERS PAYING HALF DUES	535